

Magnificat in C

Violin 2

Johann Christian Bach (1735-1782)

Editor: Christopher Boveroux

Allegro Sciolte

3

6 *f* *p*

9

12 *f*

15

18

20

Musical score for "The Rose Tree" featuring a treble and bass staff with various musical notations including notes, rests, trills, and dynamic markings.

62 *f*

67

71

77 *p*

79 *f*

83

86

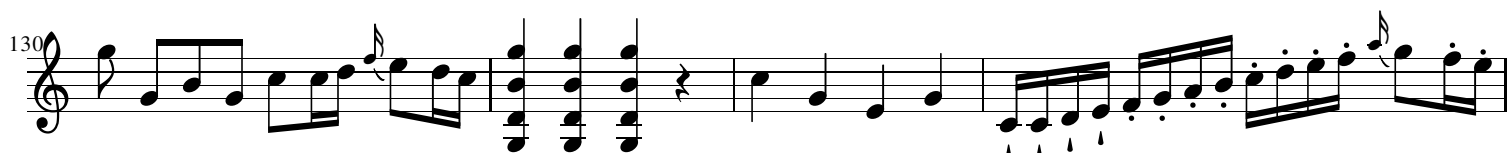
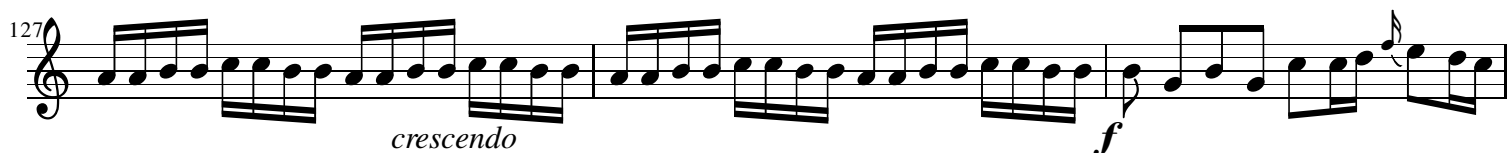
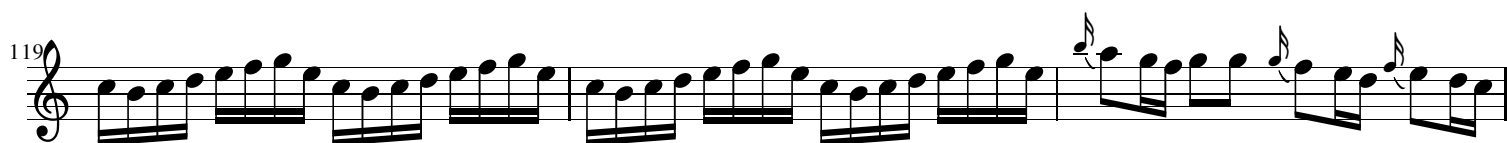
Largo

92

97



Allegro



Musical score for "The Swan" by Camille Saint-Saëns, measures 134-159. The score is written for a single melodic line in treble clef, 3/4 time. The key signature is one sharp (F#). The music features a variety of rhythmic patterns, including eighth and sixteenth notes, and rests. Dynamics are indicated by *f* (forte) and *p* (piano). The score is divided into systems of five measures each.

Measures 134-137: The melody begins with a series of eighth notes, followed by a half note. The key signature changes to one sharp (F#).

Measures 138-141: The melody continues with eighth notes, followed by a half note. The key signature changes to one sharp (F#).

Measures 142-145: The melody continues with eighth notes, followed by a half note. The key signature changes to one sharp (F#).

Measures 146-149: The melody continues with eighth notes, followed by a half note. The key signature changes to one sharp (F#).

Measures 150-153: The melody continues with eighth notes, followed by a half note. The key signature changes to one sharp (F#).

Measures 154-157: The melody continues with eighth notes, followed by a half note. The key signature changes to one sharp (F#).

Measures 158-159: The melody concludes with a half note. The key signature changes to one sharp (F#).

164 *p* *f*

167 *p*

172 *f* *p*

175 *f* *p*

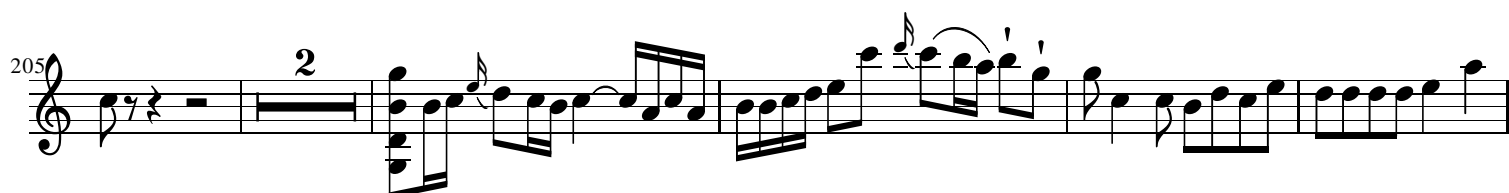
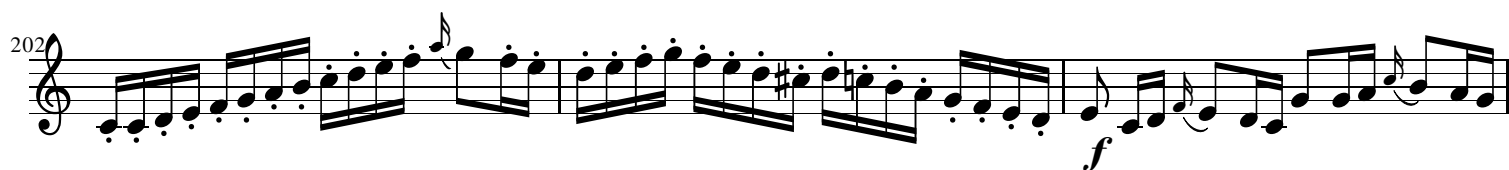
179 *f* *p* *f* *p*

183

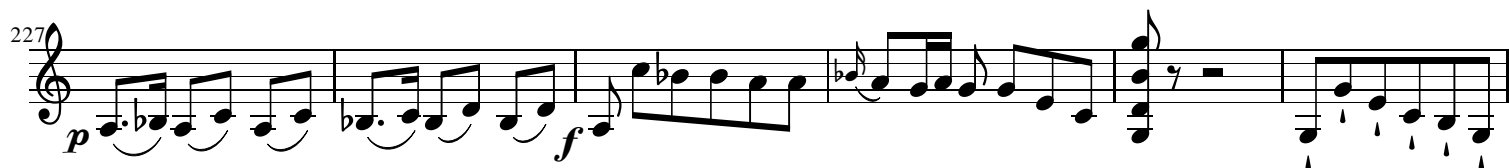
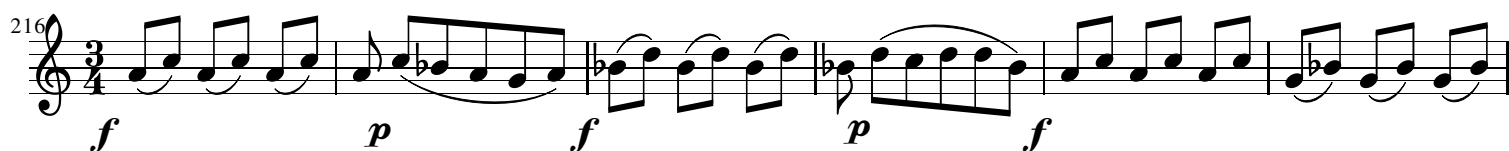
188

193 *p*

195 *crescendo* *f* *f*



Larghetto



Allegro assai

